

负荷特性 Load diagrams

45m		20m	22m	25m	27m	30m	32m	35m	37m	40m	42m	45m
2falls	2.9t	3.5m - 27.3m	2.9	2.9	2.9	2.9	2.9	2.73	2.5	2.37	2.2	2.2
3falls	2.9t	3.5m - 20.8m	2.9	2.9	2.9	2.9	2.9	2.73	2.5	2.37	2.2	2.2
4falls	2.9t	3.5m - 17.5m	2.9	2.9	2.9	2.9	2.9	2.73	2.5	2.37	2.2	2.2

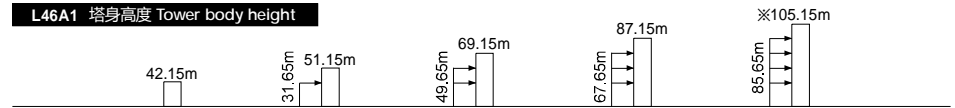
40m		20m	22m	25m	27m	30m	32m	35m	37m	40m
2falls	2.9t	3.5m - 29.2m	2.9	2.9	2.9	2.9	2.9	2.73	2.5	2.37
3falls	2.9t	3.5m - 21.7m	2.9	2.9	2.9	2.9	2.9	2.73	2.5	2.37
4falls	2.9t	3.5m - 17.8m	2.9	2.9	2.9	2.9	2.9	2.73	2.5	2.37

35m		20m	22m	25m	27m	30m	32m	35m
2falls	2.9t	3.5m - 31.2m	2.9	2.9	2.9	2.9	2.9	2.9
3falls	2.9t	3.5m - 22.8m	2.9	2.9	2.9	2.9	2.9	2.9
4falls	2.9t	3.5m - 18.2m	2.9	2.9	2.9	2.9	2.9	2.9

30m		20m	22m	25m	27m	30m
2falls	2.9t	3.5m - 30m	2.9	2.9	2.9	2.9
3falls	2.9t	3.5m - 23.3m	2.9	2.9	2.9	2.9
4falls	2.9t	3.5m - 18.5m	2.9	2.9	2.9	2.9

附着 Anchorages

L46A1 塔身高度 Tower body height



※ 超过此高度请联系我们 Over this height please contact us

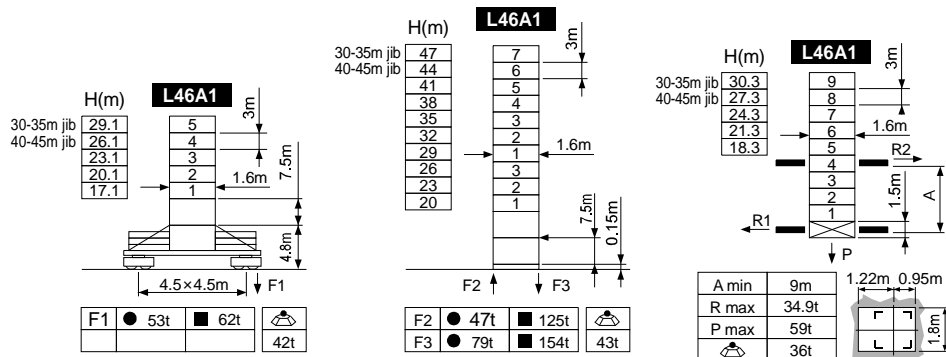
机构 Mechanisms

起升 Hoisting	50LVF20	2 falls	m/min	0 ~ 37	0 ~ 66	37kW	绕绳量 Drum capacity
		t	4	2			
3 falls	m/min	0 ~ 25	0 ~ 44				
	t	6	3				
4 falls	m/min	0 ~ 17.5	0 ~ 33				
	t	8	4				

变幅 Trolleying	40VVF30	2.5min	30kW
回转 Slewing	RCV95	0 ~ 0.8r/min	2×95Nm
行走 Traveling	RT324	0 ~ 25m/min	2×5.2kW
380V(±5%) 50Hz	93kVA		

※ 请联系我们 Please consult us △ 可选 Option

臂根铰点高度 Jib root hinge height



● 工作状态 In service F 反力 Reactions ■ 非工作状态 Out of service ⊕ 自重 Without load and ballast with longest jib and maximum height