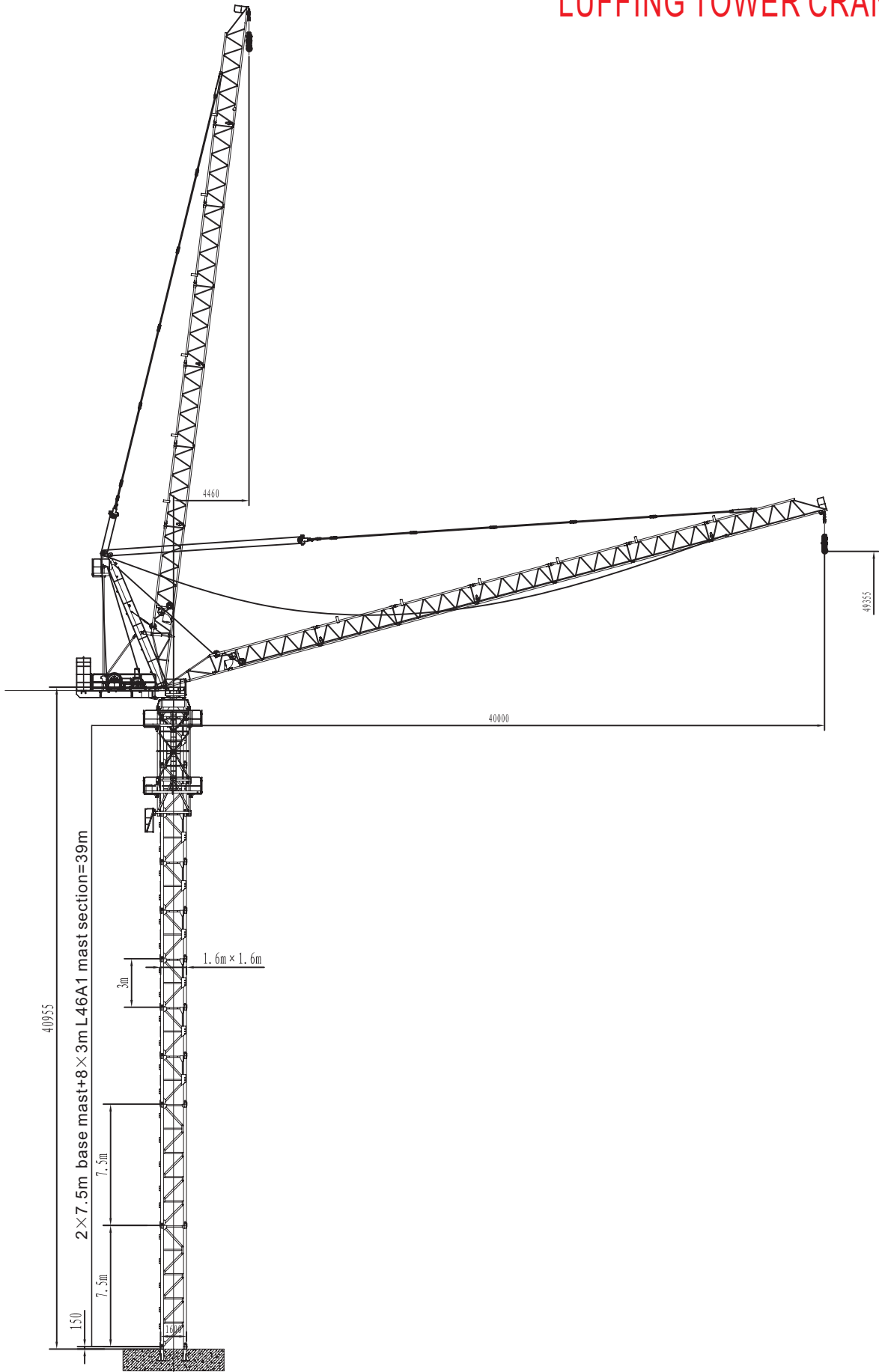
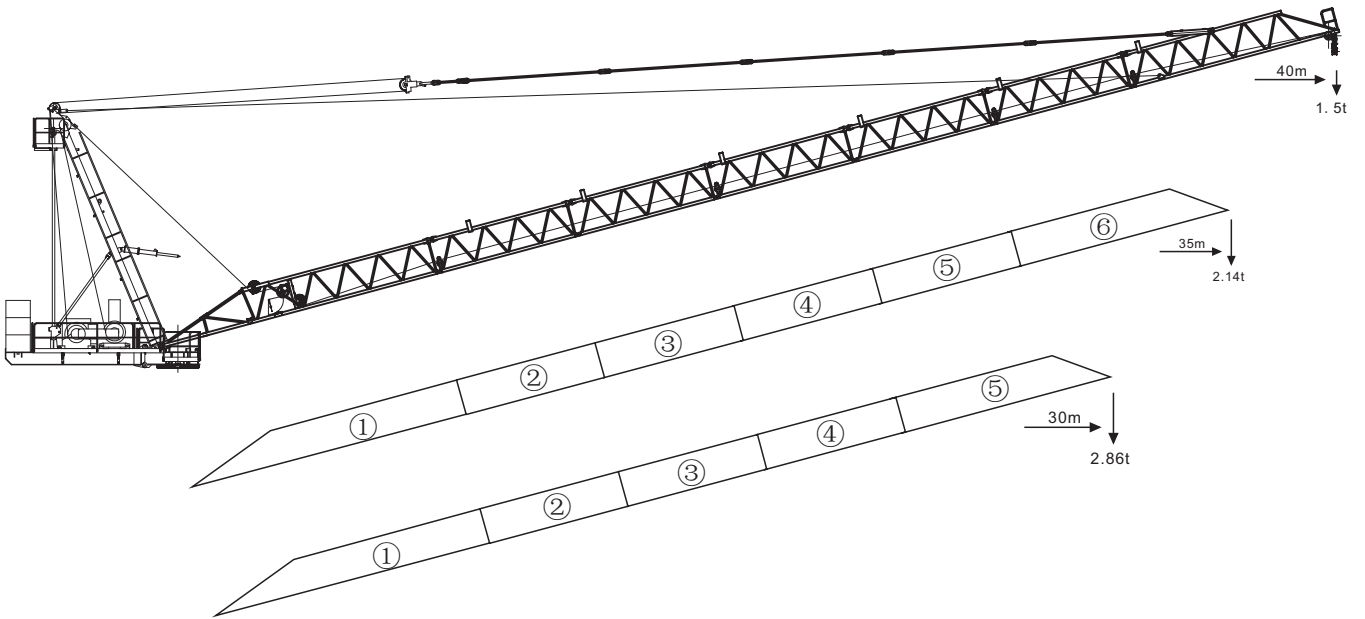
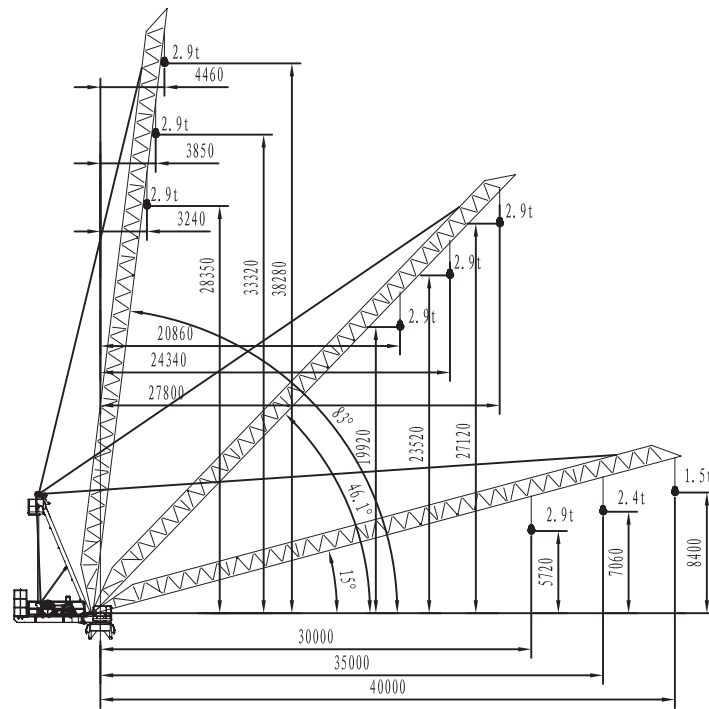


CCTL110

LUFFING TOWER CRANE



JIB COMBINATION/RADIUS&HOISTING HEIGHT

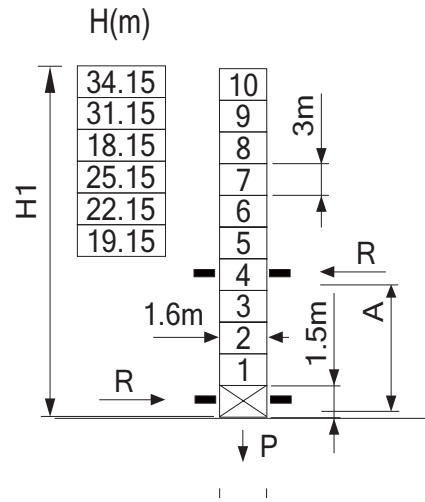
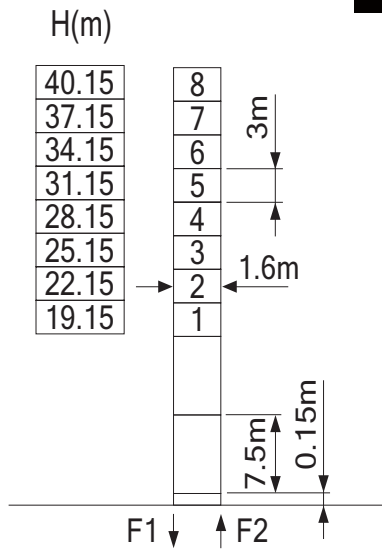


LOAD CAPACITY

				20m	22m	25m	27m	30m	32m	35m	37m	40m
40m	2 falls	2.9t-4.5m~27.8m	t	2.9	2.9	2.9	2.9	2.56	2.3	1.96	1.76	1.5
				20m	22m	25m	27m	30m	32m	35m		
35m	2 falls	2.9t-3.8m~28.9m	t	2.9	2.9	2.9	2.9	2.74	2.48	2.14		
				20m	22m	25m	27m	30m				
30m	2 falls	2.9t-3.2m~29.7m	t	2.9	2.9	2.9	2.9	2.86				

MAST HEIGHT

L46A1

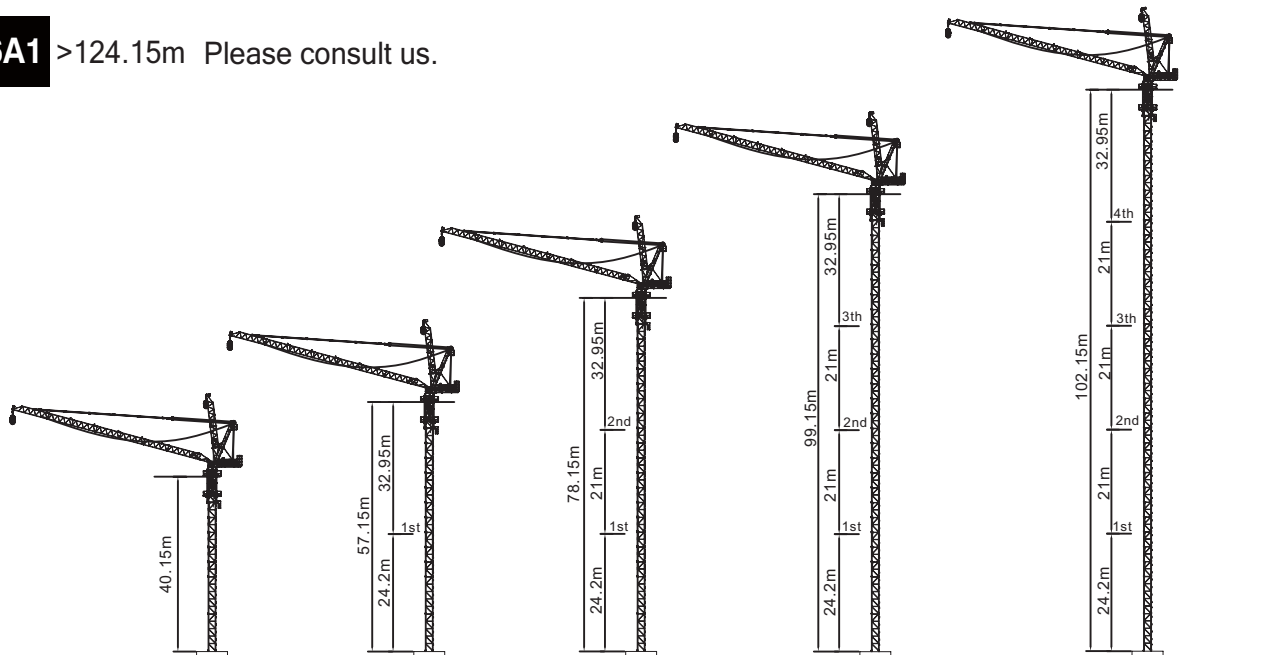


F1	● 61t	■ 87t	⚙️
F2	● 46t	■ 73t	⚙️

A min	9m
R max	35t
P max	42t

TIE SCHEDULE

L46A1 >124.15m Please consult us.



MECHANISM

	Hoisting mechanism						Rope length
	35LVF15L		m/min	0~34	0~47	0~62	
			t	3	2.2	1.2	300m >300m※
	Luffing mechanism				Slewing mechanism		
	24LFV15B	1min 40S	24kW		RVF4	0~0.8r/min	4KW
Power supply	380V(±5%) 50Hz			Power consumption	69kVA		

FOUNDATION

